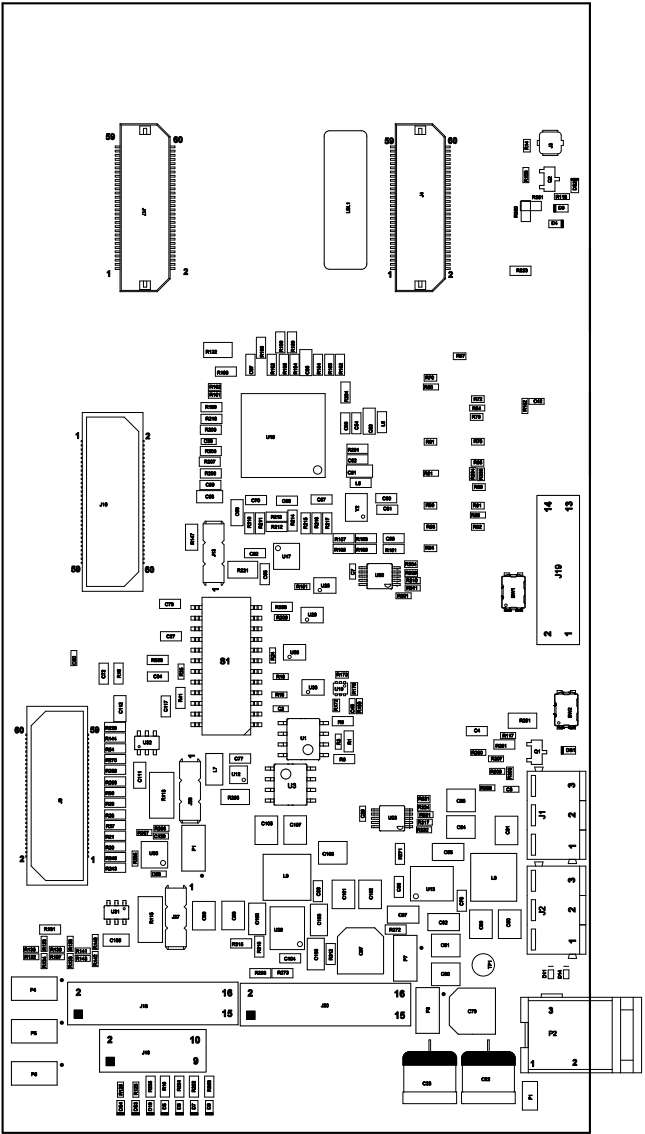
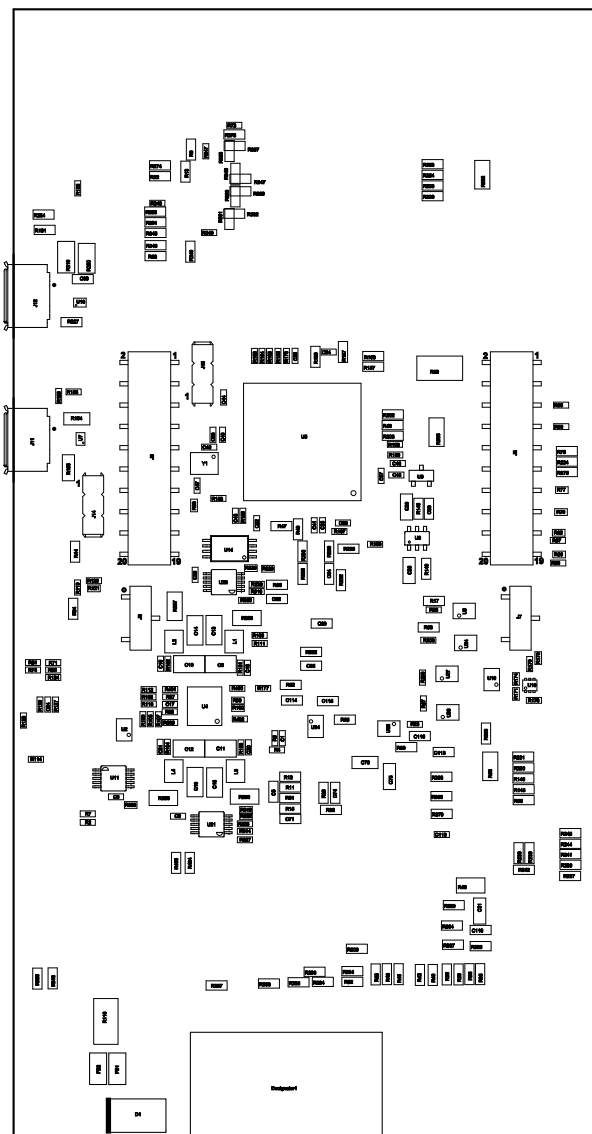


ZZ1 ■ Install label in silkscreened box after final wash. Text shall be 8 pt font. Text shall be per the Label Table in the PDF schematic.
ZZ2 ■ These assemblies are ESD sensitive, ESD precautions shall be observed.
ZZ3 ■ These assemblies must be clean and free from flux and all contaminants. Use of no clean flux is not acceptable.
ZZ4 ■ These assemblies must comply with workmanship standards IPC-A-610 Class 2, unless otherwise specified.



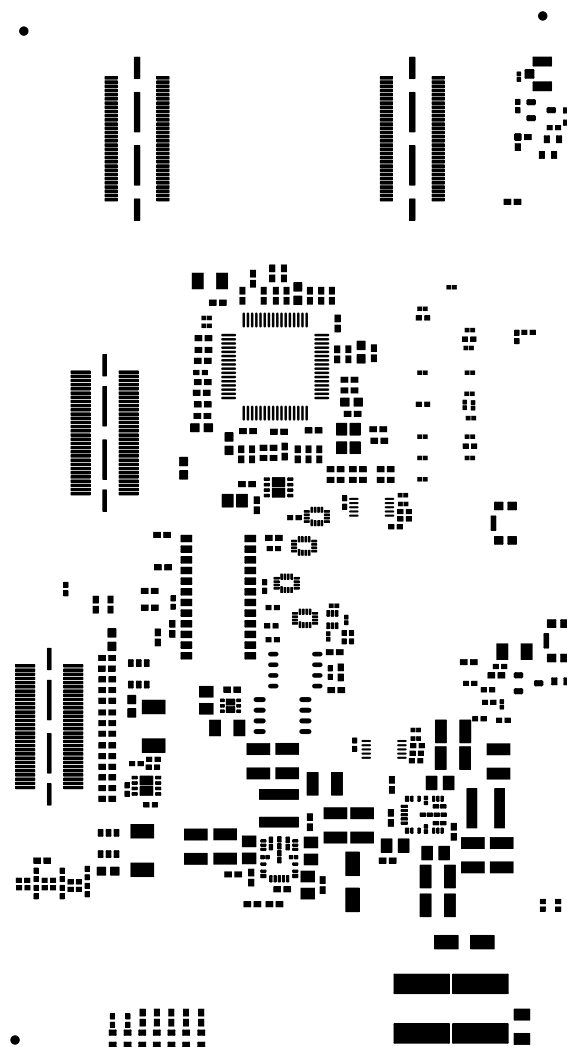
COMPONENTS MARKED 'DNP' SHOULD NOT BE POPULATED.
ASSEMBLY VARIANT: [No Variations]

PCB VIEWED FROM TOP SIDE	BOARD #: PROC074	REV: B	SVN REV: Not In VersionControl
LAYER NAME = M5 Assembly Top	TID #: N/A		
PLOT NAME = PROC074B.GM5	GENERATED : 11/28/2018 6:50:36 PM	TEXAS INSTRUMENTS	

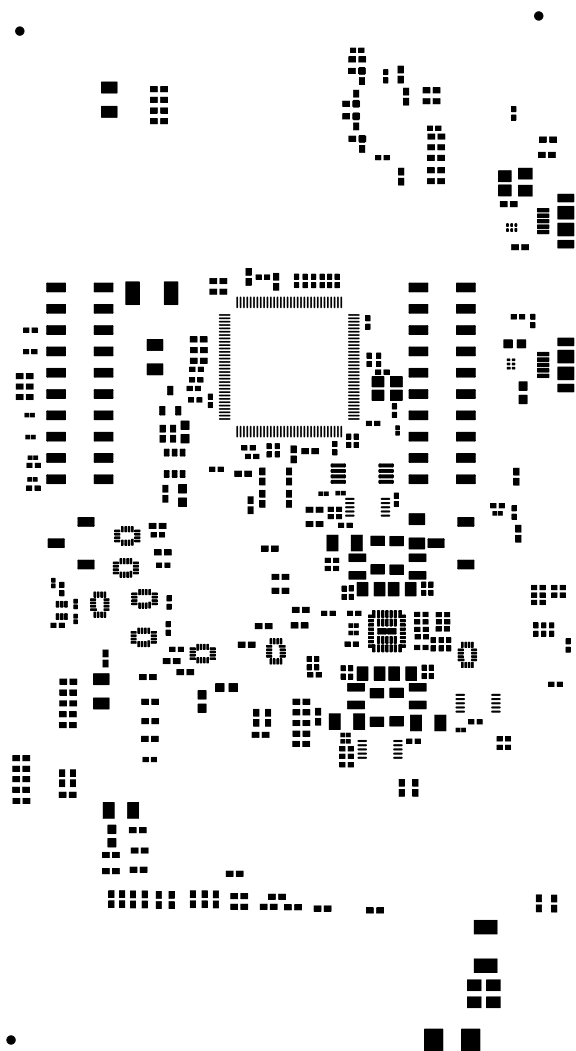


COMPONENTS MARKED 'DNP' SHOULD NOT BE POPULATED.
 ASSEMBLY VARIANT: [No Variations]

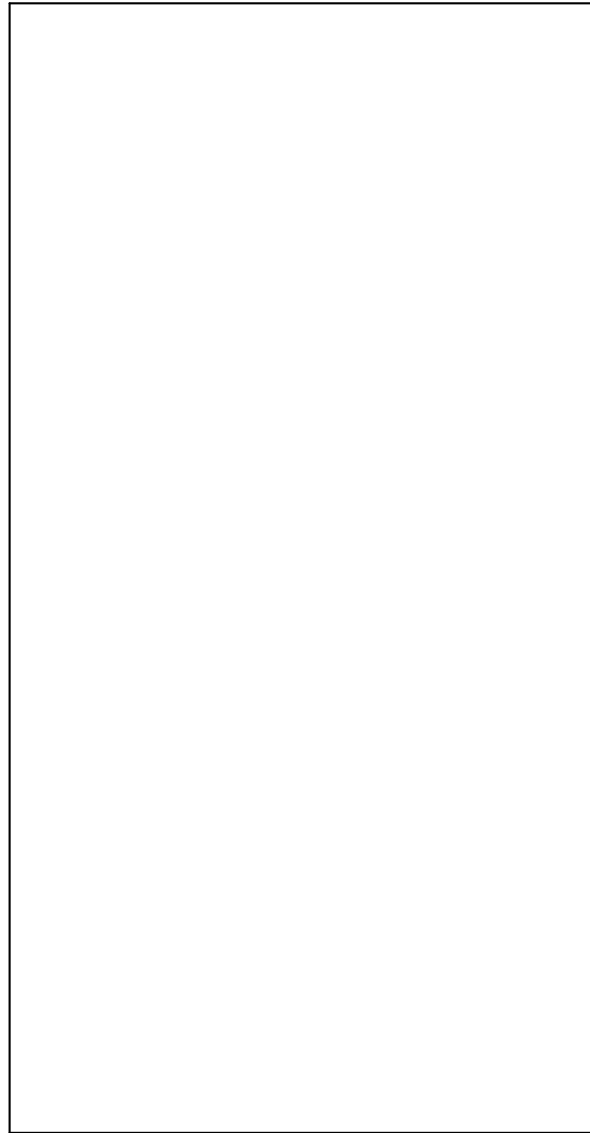
PCB VIEWED FROM BOTTOM SIDE	BOARD #: PROC074	REV: B	SUN REV: Not In VersionControl
LAYER NAME = M6 Assembly Bottom	TID #: N/A		
PLOT NAME = PROC074B.GM6	GENERATED : 11/28/2018 6:50:39 PM	TEXAS INSTRUMENTS	



ALL ARTWORK VIEWED FROM TOP SIDE	BOARD #: PROC074	REV: B	SUN REV: Not In VersionControl
LAYER NAME = Top Paste	TID #: N/A		
PLOT NAME = PROC074B.GTP	GENERATED : 11/28/2018 6:43:27 PM	TEXAS INSTRUMENTS	



ALL ARTWORK VIEWED FROM TOP SIDE	BOARD #: PROC074	REV: B	SUN REV: Not In VersionControl
LAYER NAME = Bottom Paste	TID #: N/A		
PLOT NAME = PROC074B.GBP	GENERATED : 11/28/2018 6:43:27 PM	TEXAS INSTRUMENTS	



ALL ARTWORK VIEWED FROM TOP SIDE	BOARD #: PROC074	REV: B	SUN REV: Not In VersionControl
LAYER NAME = M1 Board Outline	TID #: N/A		
PLOT NAME = PROC074B.GM1	GENERATED : 11/28/2018 6:43:28 PM		TEXAS INSTRUMENTS